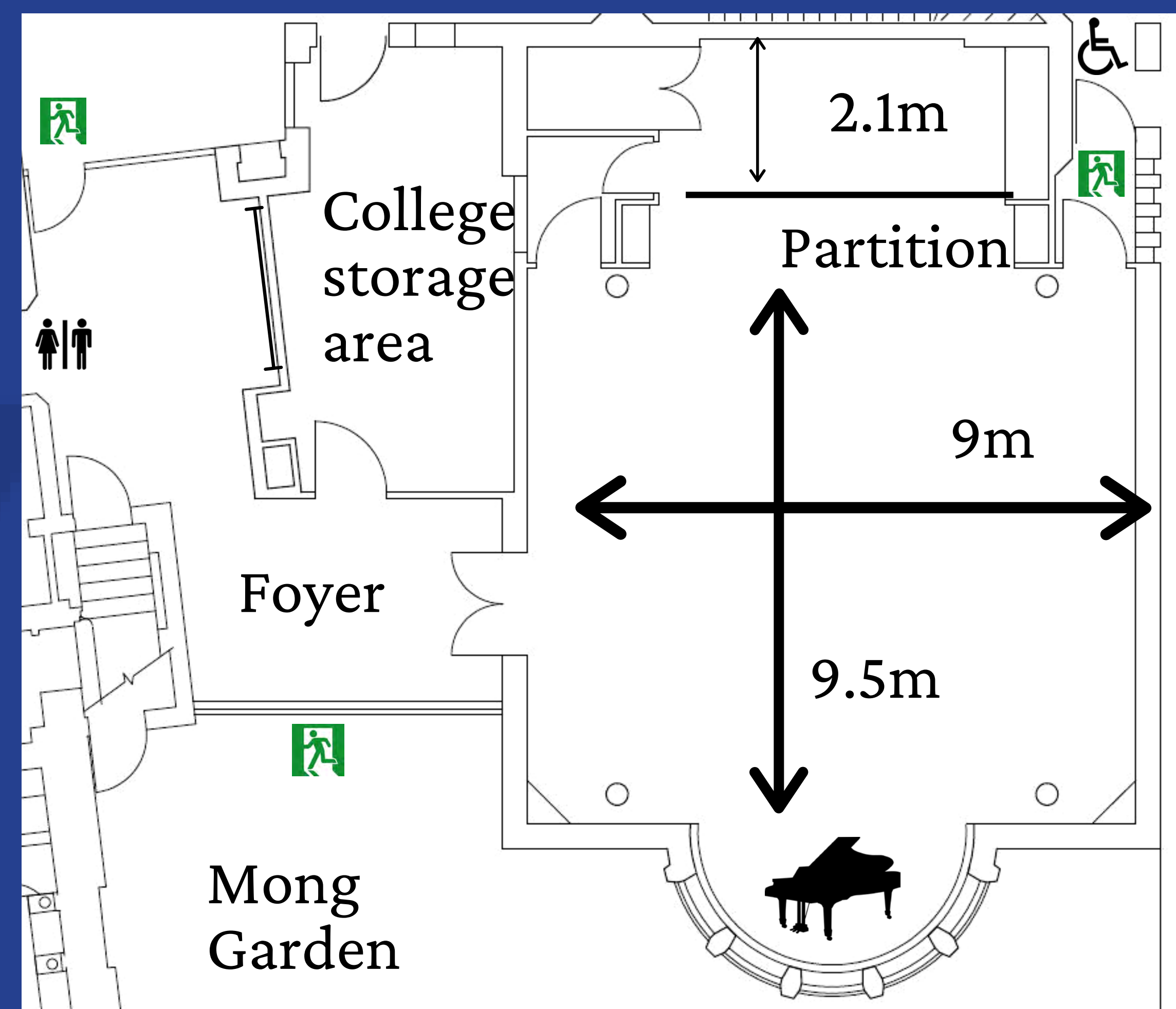




William Mong Hall



The William Mong Hall, is the largest meeting space in the College. This flexible flat-floored room has inbuilt AV technology and was designed to be multipurpose: it can be used for lectures, conferences, dinners and receptions.

It is housed in the Mong Building, which also includes a small garden, a foyer, a reception area with in-built coat rail, and separate toilet facilities.

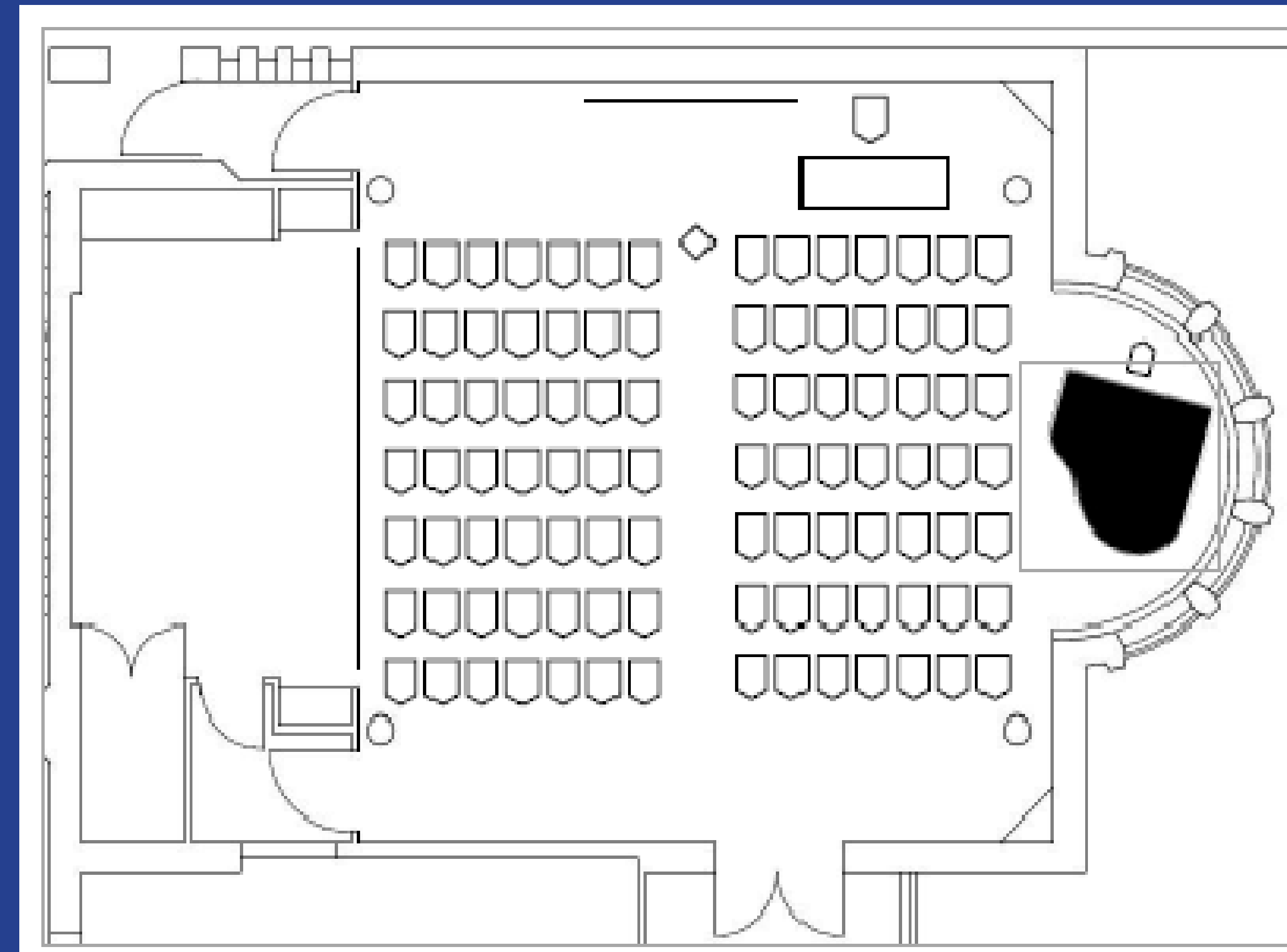
Capacities

Lecture: 100
Classroom: 40
Boardroom: 40
Reception: 100

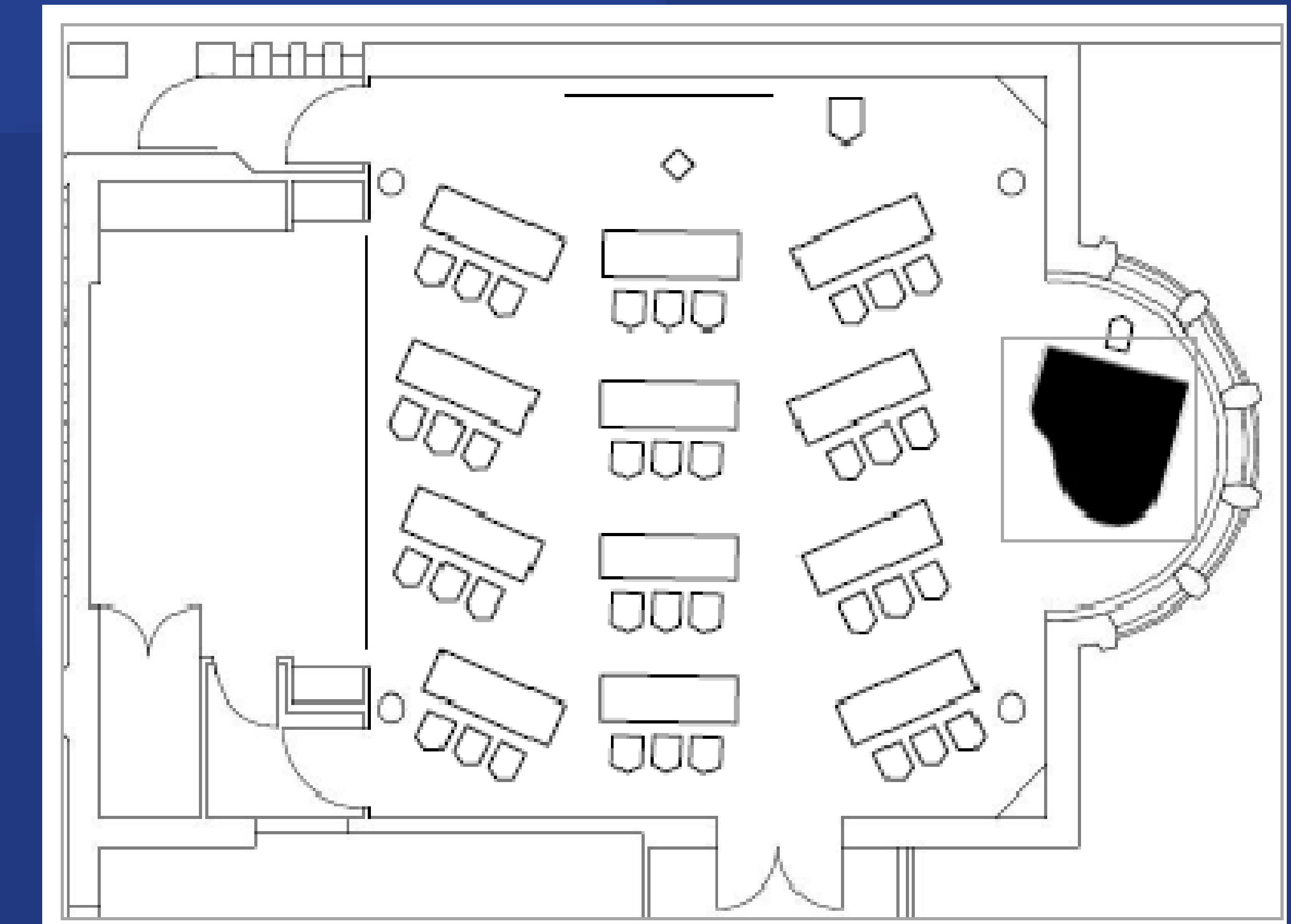
Dimensions

11.6m x 9m
Area: 105sq m
Dimensions are approximate.
Plans are not to scale.

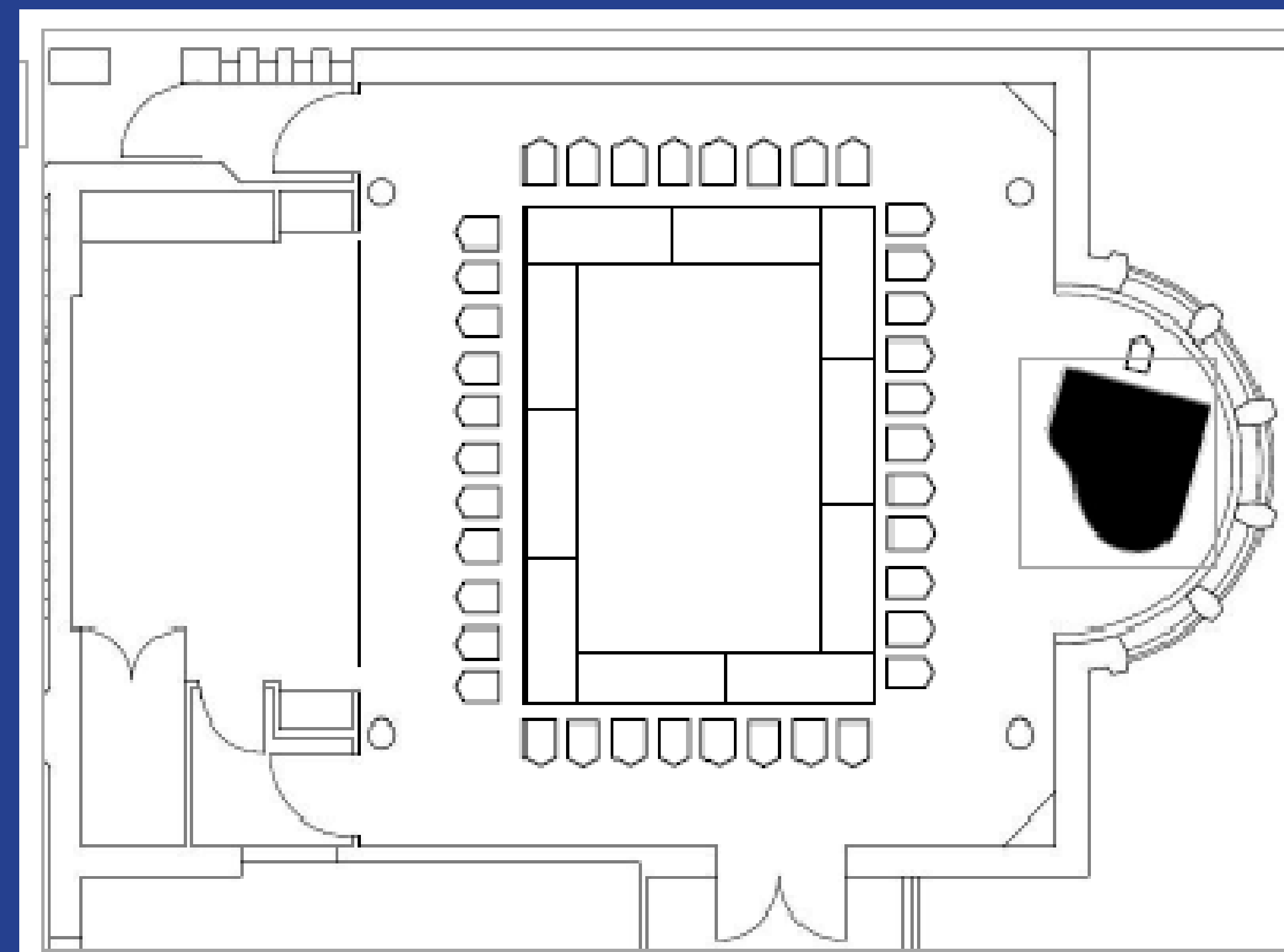
Lecture: 100



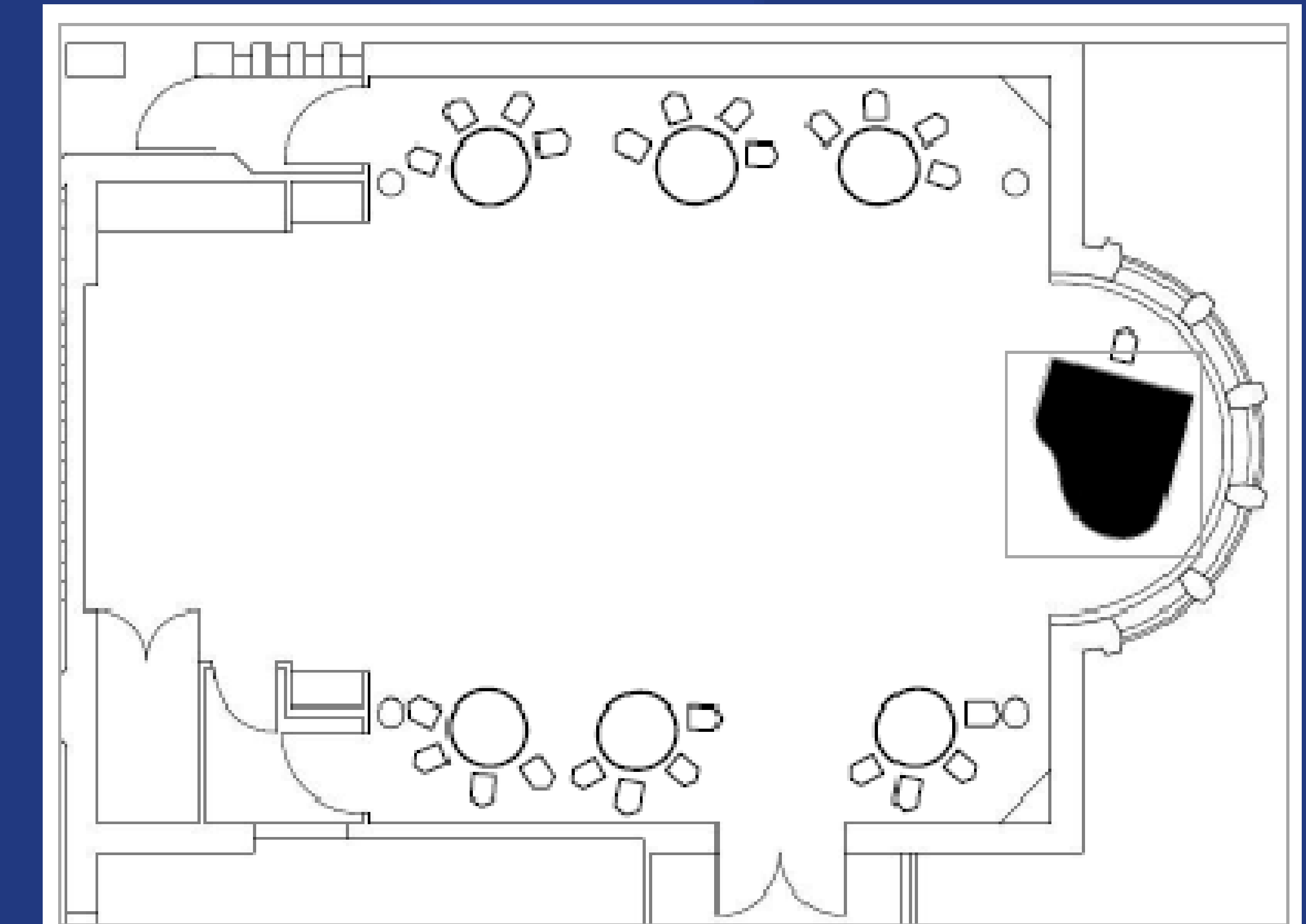
Classroom: 40



Boardroom: 40



Reception: 100



The Mong Hall was added to the College through the generosity of honorary fellow Man-Wai William Mong, a Hong Kong businessman. It was opened by HM Queen and the Duke of Edinburgh when they visited the College in 1996 for Sidney's quartercentenary year.

It is built of a white-grey Portland stone, rich in fossils, and was designed by Peter Barton and Bob Bowman.

Above are four possible room layouts to illustrate capacities. Bespoke arrangements can also be made with the Conference Office.